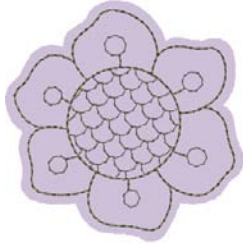


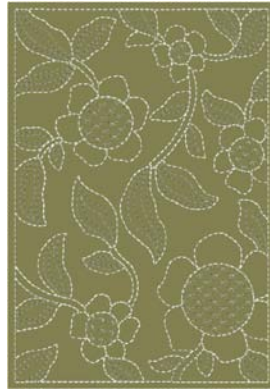
Note: Some designs in this collection may have been created using unique special stitches and/or techniques. To preserve design integrity when rescaling or rotating designs in your software, always rescale or rotate designs using the handles directly on-screen.



HG809_48 Ladybug
1.80 X 1.83 in.
45.72 X 46.48 mm
660 St. ⚙️



HG810_48 Flower
3.15 X 3.19 in.
80.01 X 81.03 mm
1,031 St. ⚙️



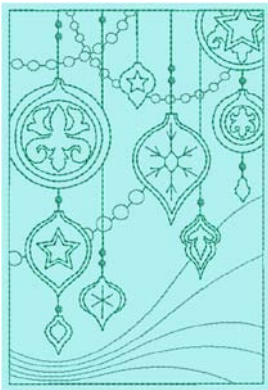
HG811_48 Garden Card
4.50 X 6.50 in.
114.30 X 165.10 mm
5,878 St. ⚙️ L



HG812_48 Snowflake Ornament
2.30 X 3.12 in.
58.42 X 79.25 mm
759 St. ⚙️



HG813_48 Merry Christmas
2.72 X 2.01 in.
69.09 X 51.05 mm
1,412 St. ⚙️



HG814_48 Ornaments Card
4.50 X 6.50 in.
114.30 X 165.10 mm
5,283 St. ⚙️ L



HG815_48 Ribbon
2.54 X 2.26 in.
64.52 X 57.40 mm
973 St. ⚙️



HG816_48 Congratulations
3.86 X 2.55 in.
98.04 X 64.77 mm
2,118 St. ⚙️



HG817_48 Flourish Card
4.50 X 6.50 in.
114.30 X 165.10 mm
6,080 St. ⚙️ L



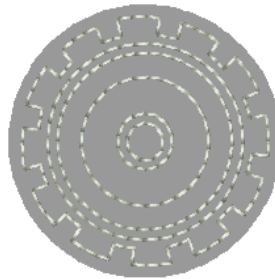
HG818_48 Happy Mother's Day
3.41 X 3.15 in.
86.61 X 80.01 mm
2,011 St. ⚙️



HG819_48 Roses Card
4.50 X 6.50 in.
38.10 X 165.10 mm
5,030 St. ⚙️ L



HG820_48 Happy Father's Day
2.34 X 2.67 in.
59.44 X 67.82 mm
1,560 St. ⚙️



HG821_48 Gear
2.06 X 2.06 in.
52.32 X 52.32 mm
811 St. ⚙️



HG822_48 Gears Card
4.50 X 6.50 in.
114.30 X 165.10 mm
4,971 St. ⚙️ L



HG823_48 Thank You
4.06 X 3.31 in.
103.12 X 84.07 mm
2,878 St. ⚙️

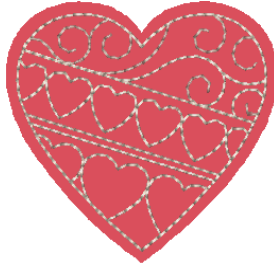
⚙️ Design contains a loose fill.
⚙️ Some white areas shown are not stitched.

L Design is larger than 5" (127 mm) in either direction.
S Design is smaller than 1.5" (38.1 mm) in either direction.

Note: Some designs in this collection may have been created using unique special stitches and/or techniques. To preserve design integrity when rescaling or rotating designs in your software, always rescale or rotate designs using the handles directly on-screen.



HG824_48 Swirls Card
4.50 X 6.50 in.
114.30 X 165.10 mm
5,461 St.



HG825_48 Heart 1
2.54 X 2.43 in.
64.52 X 61.72 mm
1,187 St.



HG826_48 Heart 2
1.69 X 1.63 in.
42.93 X 41.40 mm
527 St.



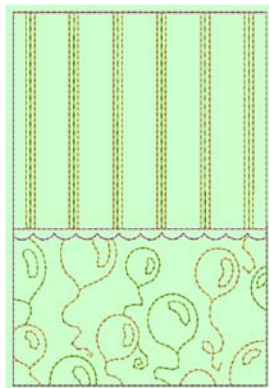
HG827_48 Love Card
4.50 X 6.50 in.
114.30 X 165.10 mm
4,402 St.



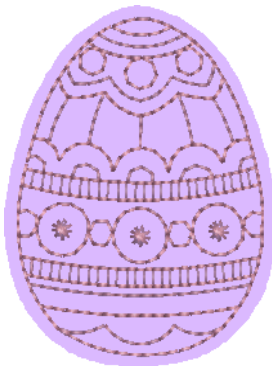
HG828_48 Cupcake
2.50 X 3.31 in.
63.50 X 84.07 mm
1,437 St.



HG829_48 Happy Birthday
1.14 X 3.99 in.
28.96 X 101.35 mm
1,264 St.



HG830_48 Balloons Card
4.50 X 6.50 in.
114.30 X 165.10 mm
4,665 St.



HG831_48 Easter Egg
2.09 X 2.79 in.
53.09 X 70.87 mm
1,637 St.



HG832_48 Easter Egg Card
4.50 X 6.50 in.
114.30 X 165.10 mm
4,976 St.



HG833_48 Baby Booties
3.31 X 2.63 in.
84.07 X 66.80 mm
1,739 St.



HG834_48 Baby
2.90 X 1.32 in.
73.66 X 33.53 mm
1,695 St.



HG835_48 Baby Card
4.50 X 6.50 in.
114.30 X 165.10 mm
4,639 St.

Design contains a loose fill.
 Some white areas shown are not stitched.

Design is larger than 5" (127 mm) in either direction.
 Design is smaller than 1.5" (38.1 mm) in either direction.

Listings below indicate color sample, stitching order and suggested thread color number in Isacord, YLI Fine Metallic, Yenmet or YLI Variegated threads.

HG809_48 Ladybug

■	1. Placement Stitch/ Cut Line.....	0020
■	2. Design.....	2600

HG810_48 Flower

■	1. Placement Stitch/ Cut Line.....	0020
■	2. Design.....	0454

HG811_48 Garden Card

■	1. Placement Stitch.....	0020
■	2. Design.....	0101

HG812_48 Snowflake Ornament

■	1. Placement Stitch/ Cut Line.....	0020
□	2. Center.....	0015
■	3. Blue Linework.....	4220
■	4. Green Linework.....	5440

HG813_48 Merry Christmas

■	1. Placement Stitch/ Cut Line.....	0020
□	2. White Linework.....	0015
■	3. Letters.....	4421

HG814_48 Ornaments Card

■	1. Placement Stitch.....	0020
■	2. Blue Waves.....	4220
■	3. Green Designs.....	5100

HG815_48 Ribbon

■	1. Placement Stitch/ Cut Line.....	0020
■	2. Blue Linework.....	4610
■	3. Ribbon.....	0132

HG816_48 Congratulations

■	1. Placement Stitch/ Cut Line.....	0020
■	2. Design.....	4610
□	3. Letters.....	0015

HG817_48 Flourish Card

■	1. Placement Stitch.....	0020
■	2. Design.....	4610

HG818_48 Happy Mother's Day

■	1. Placement Stitch/ Cut Line.....	0020
■	2. Rose & Linework.....	2153
■	3. Lettering.....	1755

HG819_48 Roses Card

■	1. Placement Stitch.....	0020
■	2. Leaves & Stems.....	2153
■	3. Roses.....	2241

HG820_48 Happy Father's Day

■	1. Placement Stitch/ Cut Line.....	0020
■	2. Linework.....	0131
□	3. Lettering.....	0015

HG821_48 Gear

■	1. Placement Stitch/ Cut Line.....	0020
□	2. Design.....	0015

HG822_48 Gears Card

■	1. Placement Stitch.....	0020
■	2. Grey Linework.....	0131
■	3. Brown Linework.....	0853
■	4. Dark Grey Linework.....	2564

HG823_48 Thank You

■	1. Placement Stitch/ Cut Line.....	0020
■	2. Inner Linework.....	2764
■	3. Outer Linework.....	2600
■	4. Lettering.....	2764

HG824_48 Swirls Card

■	1. Placement Stitch.....	0020
■	2. Dark Linework.....	2600
■	3. Medium Linework.....	2764
■	4. Light Linework.....	2250

HG825_48 Heart 1

■	1. Placement Stitch/ Cut Line.....	0020
■	2. Design.....	2171

HG826_48 Heart 2

■	1. Placement Stitch/ Cut Line.....	0020
■	2. Design.....	1921

HG827_48 Love Card

■	1. Placement Stitch.....	0020
■	2. Pink Lettering.....	2241

HG828_48 Cupcake

■	1. Placement Stitch/ Cut Line.....	0020
■	2. Orange Linework Frame.....	0904
□	3. Design.....	0015

HG829_48 Happy Birthday

■	1. Placement Stitch/ Cut Line.....	0020
□	2. Linework.....	0015
■	3. Lettering.....	2508

HG830_48 Balloons Card

■	1. Placement Stitch.....	0020
■	2. Orange Linework.....	0904
■	3. Green Linework.....	5912
■	4. Pink Linework.....	2508

HG831_48 Easter Egg

■	1. Placement Stitch/ Cut Line.....	0020
■	2. Design.....	2532

HG832_48 Easter Egg Card

■	1. Placement Stitch.....	0020
■	2. Green Grid.....	5730
■	3. Blue Eggs.....	4122
■	4. Purple Eggs.....	2640
■	5. Pink Eggs.....	2532
■	6. Orange Eggs.....	0700

HG833_48 Baby Booties

■	1. Placement Stitch/ Cut Line.....	0020
■	2. Light Pink Linework.....	2530
■	3. Dark Pink Linework.....	2520

HG834_48 Baby

■	1. Placement Stitch/ Cut Line.....	0020
■	2. Linework.....	5730
■	3. Lettering.....	5531

HG835_48 Baby Card

■	1. Placement Stitch.....	0020
■	2. Light Blue Linework.....	4240
■	3. Dark Blue Linework.....	4220

CREATIVE GREETINGS CARDS WITH ENVELOPES

This collection of cards is stitched on paper. Each of the 10 card designs has one or more coordinating cut-out pieces to accessorize your greeting cards. Mix and match these cut-out pieces to create even more unique greeting cards. Make one for all your friends for every occasion!

GUIDELINES FOR STITCHING ON PAPER

Paper Choice

- There are many types of cardstock and scrapbooking paper available. ALWAYS test your paper choice.
- The more “fabric-like” the paper, the easier it will be to embroider.
- Mulberry paper is an easily found and versatile paper that has the distinction of having feathering edges when wet and torn. It is one of the best papers to embroider on as it has a high fiber content. It is available in many colors and is also available as a double sided paper featuring 2 coordinating colors. Mulberry papers are widely found on websites as well as at many national arts and crafts stores.
- Cardstock is another paper that can be embroidered on. The textured ones are fun and add variety to the project. Plain colored cardstock works well also for a simpler look. Cardstock is readily available in many colors and styles.
- Handmade papers are another excellent choice for embroidery. Some of these papers have extra texture created by threads, leaves or seeds and can be embroidered on as long as these fibers are not too thick or stiff. Handmade papers are available through different venues, such as craft stores, scrapbooking stores and websites. Many websites specialize in handmade papers.
- Experiment with the many different types of papers that are available and enjoy making your own embroidered cards!

Needle Choice

- Use a fine sharp embroidery needle. Size 65/9 is recommended for best results.

Thread Choice

- Polyester Embroidery Thread is ideal for embroidering on paper.
- Try using Multi-Color Thread to add interest.

Supplies for Creating Greeting Cards

- Cut-Away Stabilizer with pressure sensitive adhesive (aka sticky-backed cutaway stabilizer)
- Sharp Embroidery Needles size 65/9
- Embroidery Thread
- Bobbin Thread
- Permanent Glue Runner
- Mulberry or cardstock paper (see Guidelines for Stitching on Paper)
- Paper for inside lining (lighter weight) to cover back side of stitching (optional)

INSTRUCTIONS FOR CREATING GREETING CARDS

1. Cut Mulberry or cardstock paper to 6 1/2” x 9”. Read and follow the Guidelines for Stitching on paper above.
2. Fold paper in half to measure 6 1/2” x 4 1/2” for card.
3. Hoop one piece of sticky-backed cut-away stabilizer with paper side up. Score paper and remove release paper to expose the adhesive surface.
4. Place hoop on the embroidery machine and select the card design of your choice from the collection.
5. Stitch the first color of the design (the placement line) **Photo 1**

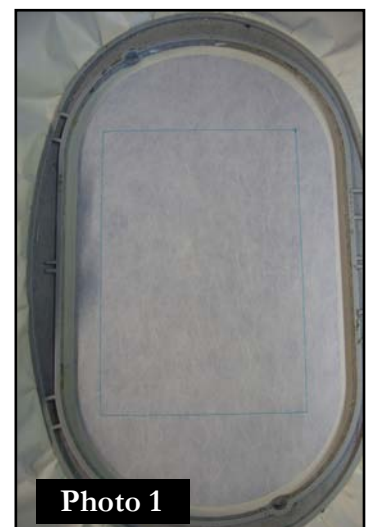


Photo 1

TIP: If your embroidery machine has an automatic thread cutter, it is best to turn this feature off when stitching on paper.

- Place the front of the card right side up over the stitched placement line.

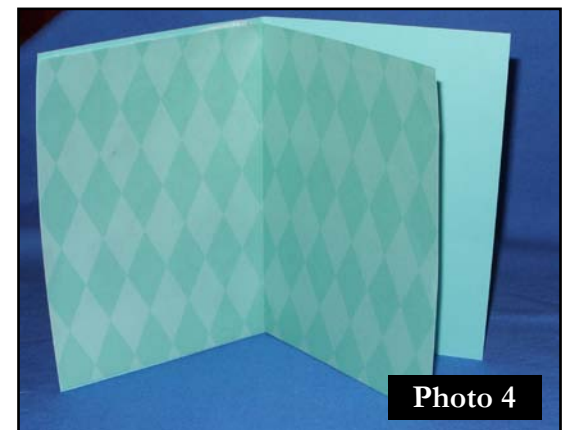
Photo 2

- Stitch the remaining colors to finish the design.
- Remove the hoop from the machine. Remove the stabilizer with the card still attached from the hoop.
- Carefully cut away the excess stabilizer from the top, right side and bottom along the edges of the card. **Photo 3**



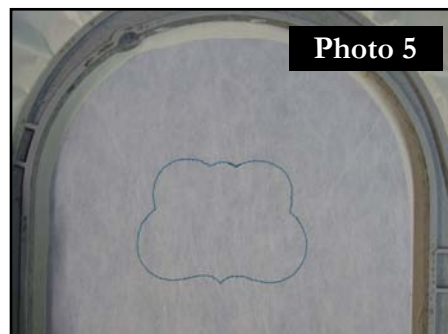
- Turn the card over to the wrong side and trim the remaining stabilizer along the fold line of the card. Use the stitched line on the stabilizer as the cutting guide.
- Cut the lighter weight paper for lining the inside of the card (and hiding bobbin stitches) to 6 1/2" x 9".
- Fold lining in half to measure 6 1/2" x 4 1/2".
- Using the permanent glue runner, add glue to the wrong side of the card front. Place lighter weight paper over the glue to cover the wrong side of the stitching.

NOTE: You will be leaving the other side free Photo 4

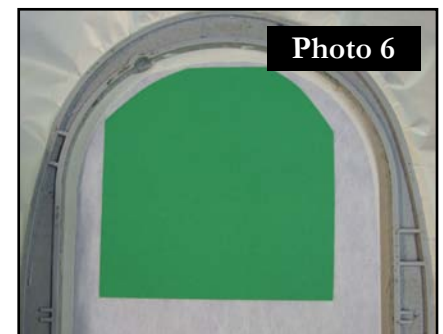


CREATE & CUT-OUT PIECES TO EMBELLISH CARD FRONT

- Hoop one piece of sticky-backed cut-away stabilizer with paper side up. Score paper and remove release paper to expose the adhesive surface.
- Place hoop on the embroidery machine and select the cut-out design of your choice from the collection.
- Stitch the first color of the design (the placement stitch/cutline) **Photo 5**



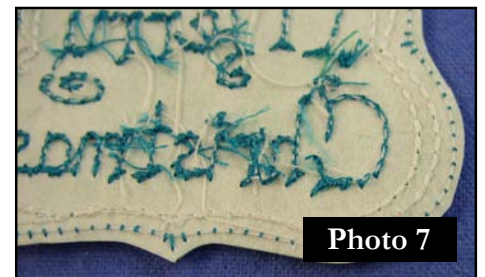
- Place a piece of heavy paper over the stitched placement line. **Photo 6**
- Stitch the remaining colors to finish the design.



- Remove the hoop from the machine. Remove the stabilizer with the cut-out element still attached from the hoop.
- Carefully cut the element out from the back side. Cut just to the outside of the placement stitch/cut line. **Photo 7**

NOTE: If you own the Bernina CutWork Accessory and are using the CWC files, you will embroider the design as outlined above then remove the needle, attach the CutWork Accessory and the CWC file will cut the shape out for you.

- Repeat for additional cut-out pieces as desired.



CREATE & CUT-OUT PIECES TO EMBELLISH CARD FRONT

- Attach the cut out pieces to the front of the card using glue.
 - If you would like the cut-out pieces to appear raised from the front of the card use a 3-dimensional glue such as Helmar® Liquid Scrap Dots or Glue Dots®.

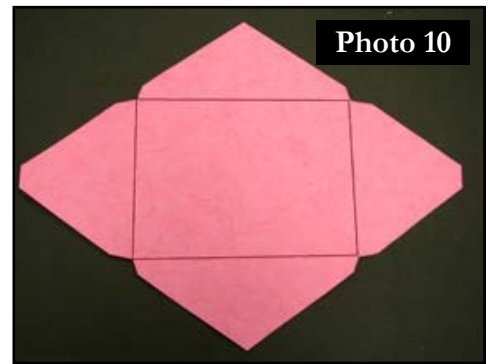
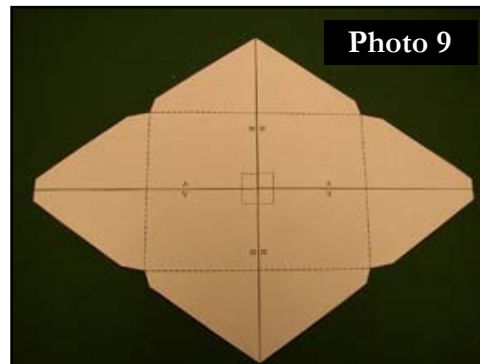
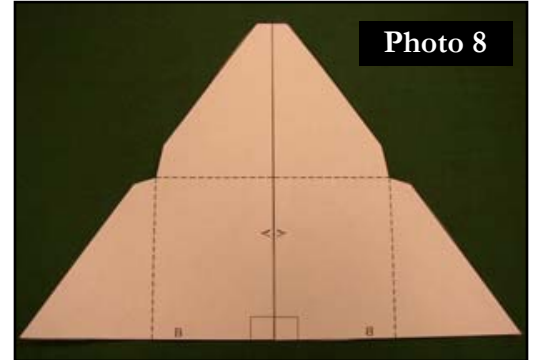
CREATE ENVELOPES

Supplies for Creating Envelope

- 12" x 12" Mulberry or cardstock paper to coordinate with card
- Envelope Template 1 or 2
- Permanent Glue Runner
- Tape

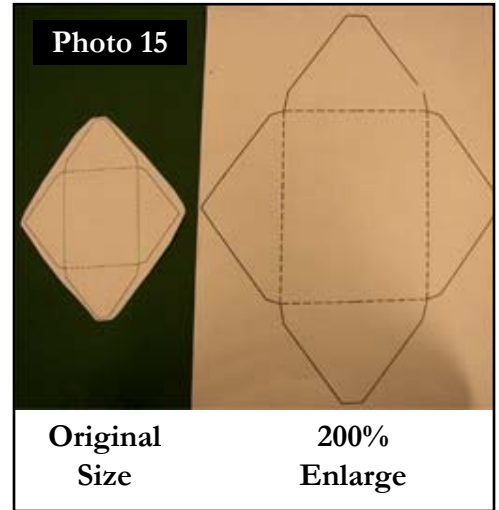
INSTRUCTIONS FOR ENVELOPE USING TEMPLATE 1:

1. Print both pages of template 1.
2. Cut out along black lines. You will have 4 separate pieces.
3. Align two "A" sides together and tape. **Photo 8**
4. Align the remaining two "A" sides together and tape.
5. Place "B" sides together and tape to form actual size template. **Photo 9**
6. Trace template onto the wrong side of paper.
7. Cut out the envelope from the Mulberry paper or cardstock. **Photo 10**
8. Use a creasing tool to crease fold lines as indicated by dotted lines on the template.
9. With wrong side of paper up, fold and finger press sides to the center of the envelope. **Photo 11**
10. Fold the bottom of the envelope up and top of envelope down. **Photo 12**
11. Use the Helmar Permanent Glue Runner to glue the overlapping portion of the sides together. **Photo 13**
12. Add a line of glue on the wrong side of the bottom of the envelope. **Photo 14**
13. Finger press in place to create the envelope.
14. Place card into envelope.



INSTRUCTIONS FOR ENVELOPE USING TEMPLATE 2:

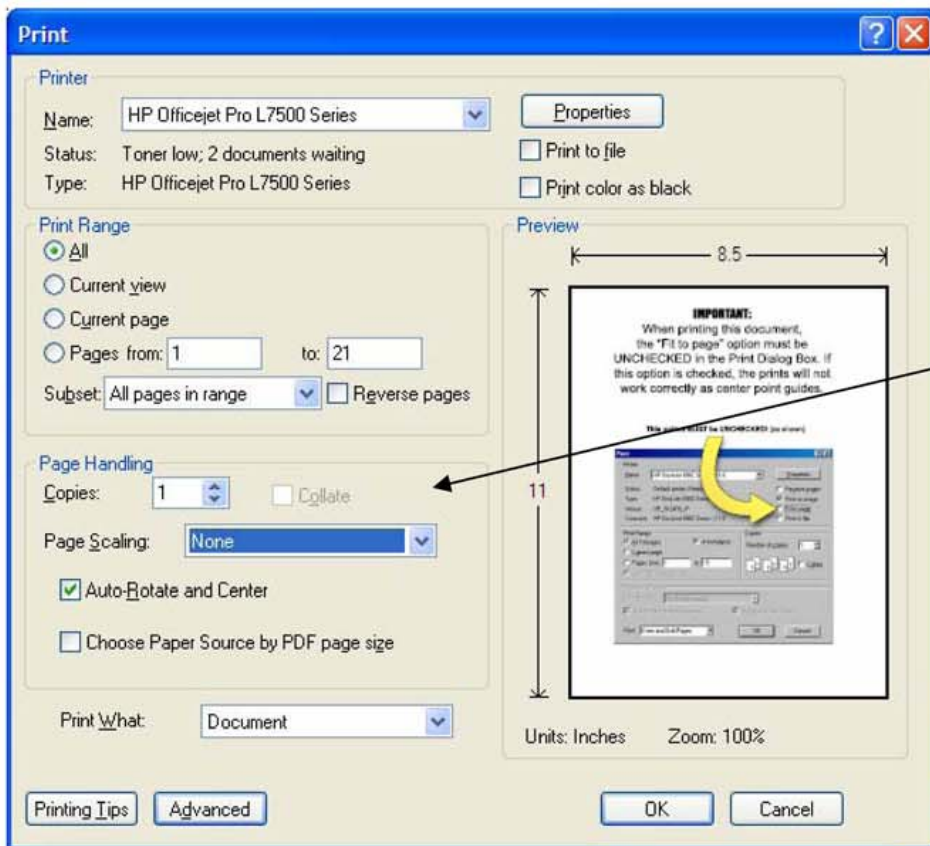
1. Print a copy of Template 2. Cut out around template. Enlarge 200%.
Photo 15
2. Cut out along black lines.
3. Trace template onto wrong side of paper.
4. Cut out template. **Photo 10 above**
5. With wrong side of paper up, fold and finger press sides, bottom, and top of envelope. **Photo 11 & 12 above**
6. Use the Helmar Permanent Glue Runner to glue the overlapping portion of the sides together. **Photo 13 above**
7. Add a line of glue on the wrong side of the bottom of the envelope.
Photo 13 above
8. Finger press in place to create the envelope.
9. Place card into envelope.



Mix & match alternate colors to create your own cards, or use the card elements for your next scrapbooking project!

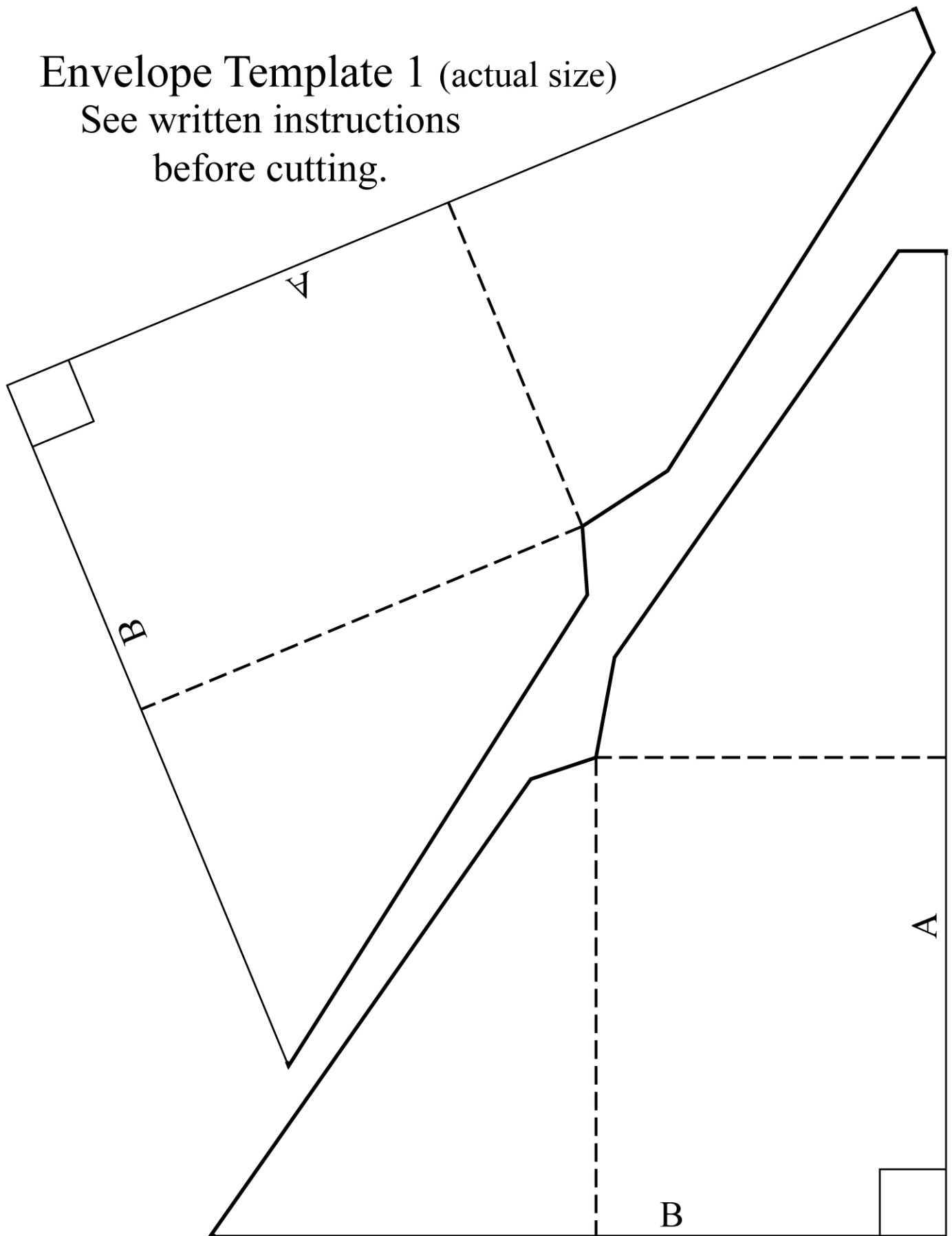
IMPORTANT:

When printing this document, the “Fit to page” option must be **UNCHECKED** or the “Page Scaling” option must be set to **NONE** depending on your printers options. If this option is set incorrectly, the prints will not work correctly as templates because they will not print at actual size.



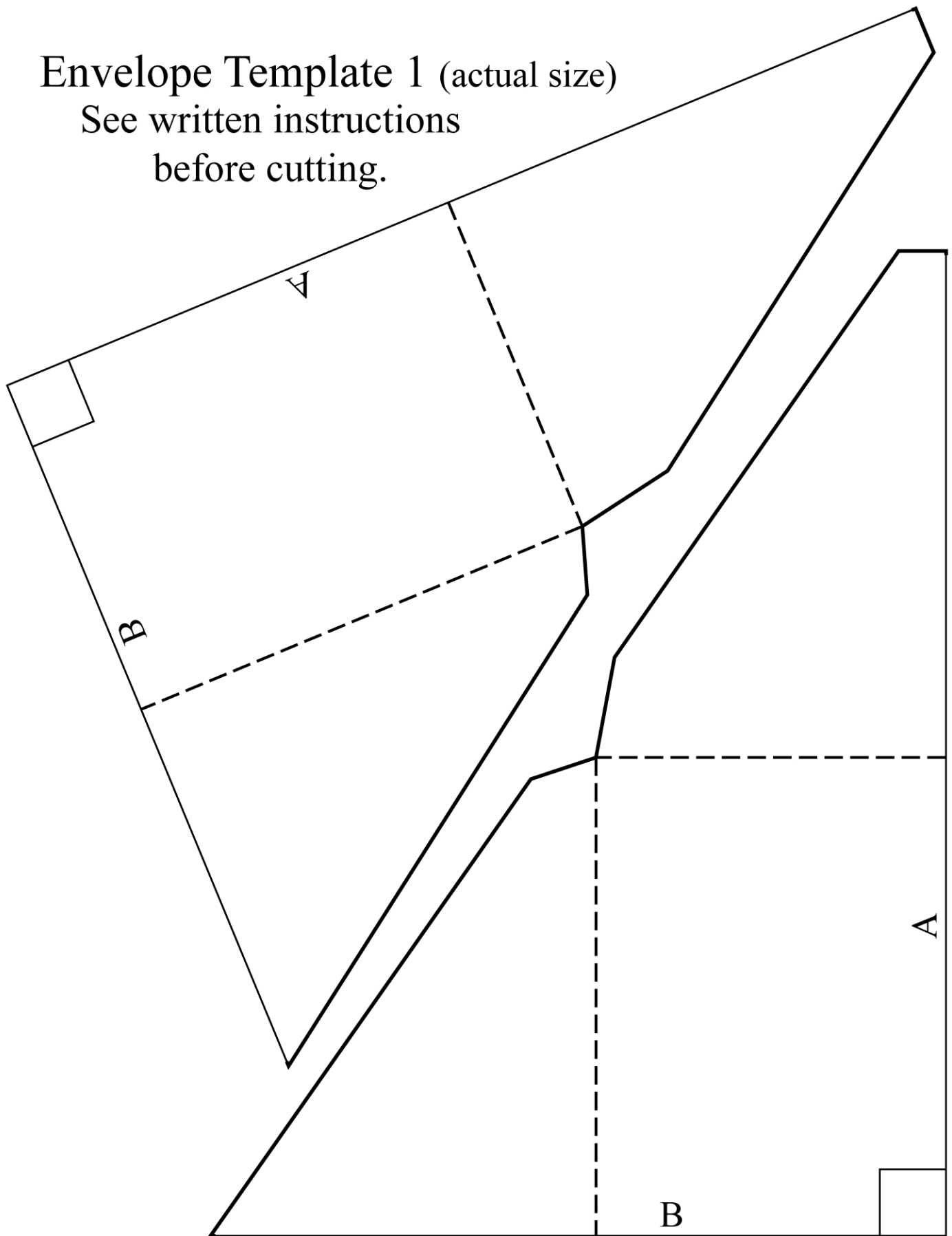
Envelope Template 1 (actual size)

See written instructions
before cutting.



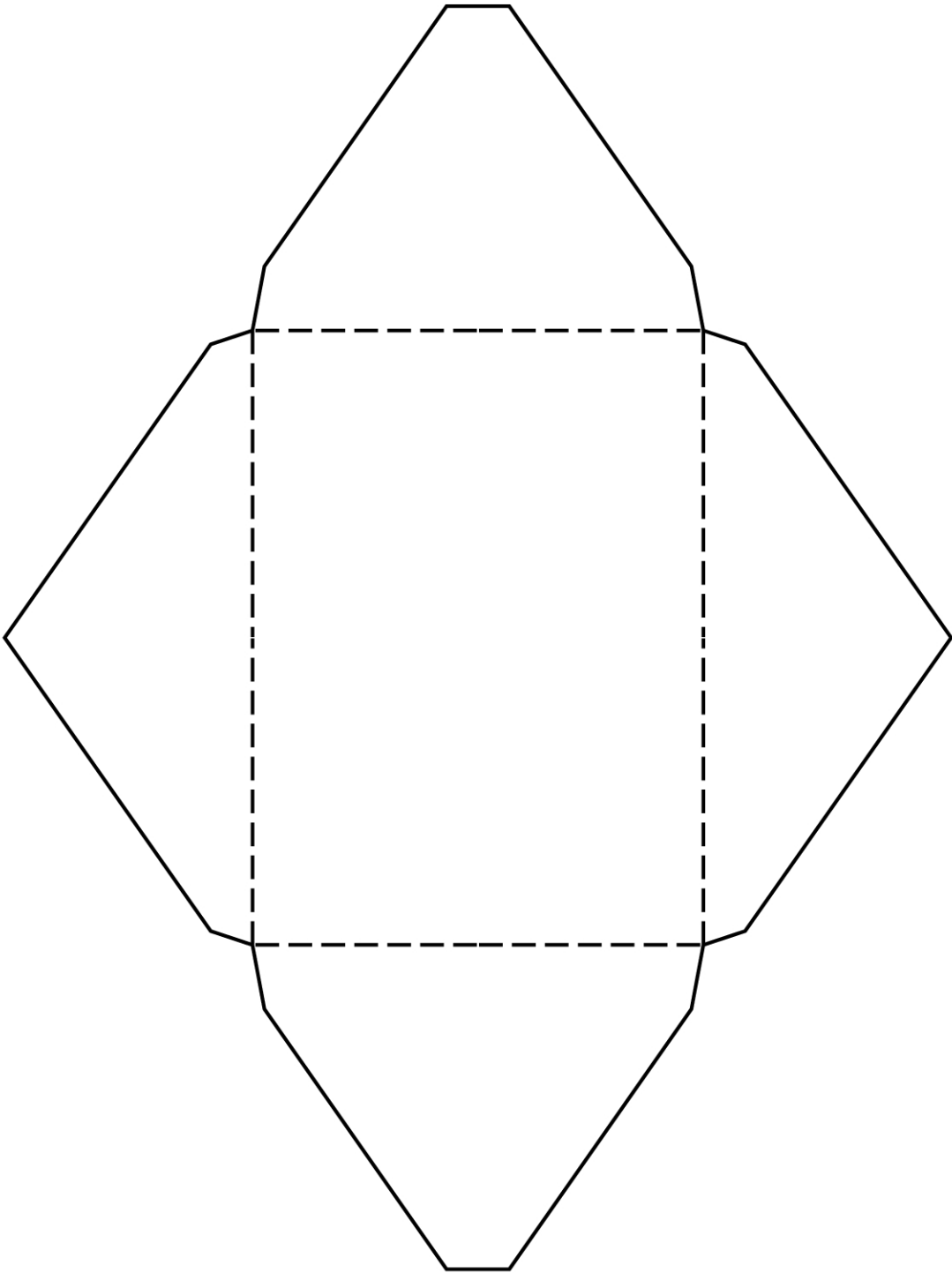
Envelope Template 1 (actual size)

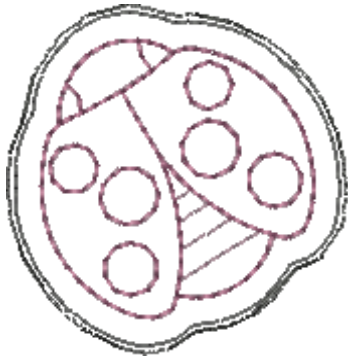
See written instructions
before cutting.



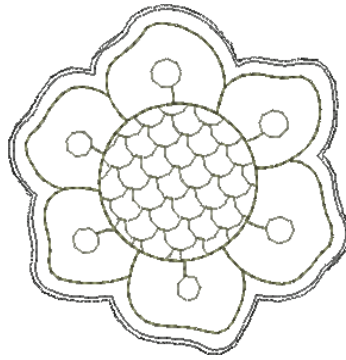
Envelope Template 2

enlarge 200%

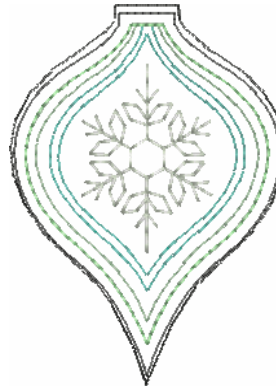




HG809_48_CWC For Use With the Bernina CutWork Accessory
1.88 X 1.91 in.
47.75 X 48.51 mm
1,069 St.



HG810_48_CWC For Use With the Bernina CutWork Accessory
3.22 X 3.26 in.
81.79 X 82.80 mm
1,759 St.



HG812_48_CWC For Use With the Bernina CutWork Accessory
2.38 X 3.25 in.
60.45 X 82.55 mm
1,322 St.



HG813_48_CWC For Use With the Bernina CutWork Accessory
2.80 X 2.10 in.
71.12 X 53.34 mm
1,991 St.



HG815_48_CWC For Use With the Bernina CutWork Accessory
2.65 X 2.36 in.
67.31 X 59.94 mm
1,674 St.



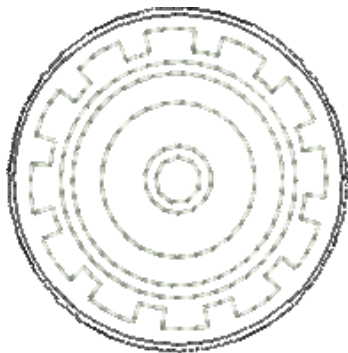
HG816_48_CWC For Use With the Bernina CutWork Accessory
3.94 X 2.63 in.
100.08 X 66.80 mm
2,866 St.



HG818_48_CWC For Use With the Bernina CutWork Accessory
3.52 X 3.23 in.
89.41 X 82.04 mm
2,771 St.



HG820_48_CWC For Use With the Bernina CutWork Accessory
2.42 X 2.75 in.
61.47 X 69.85 mm
2,173 St.



HG821_48_CWC For Use With the Bernina CutWork Accessory
2.14 X 2.14 in.
54.36 X 54.36 mm
1,245 St.



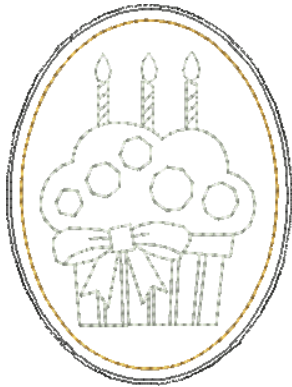
HG823_48_CWC For Use With the Bernina CutWork Accessory
4.14 X 3.41 in.
105.16 X 86.61 mm
3,738 St.



HG825_48_CWC For Use With the Bernina CutWork Accessory
2.62 X 2.52 in.
66.55 X 64.01 mm
1,711 St.

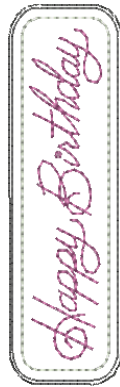


HG826_48_CWC For Use With the Bernina CutWork Accessory
1.76 X 1.72 in.
197.10 X 43.69 mm
880 St. **L**



HG828_48_CWC For Use With the
Bernina CutWork Accessory

2.57 X 3.39 in.
65.28 X 86.11 mm
2,085 St.



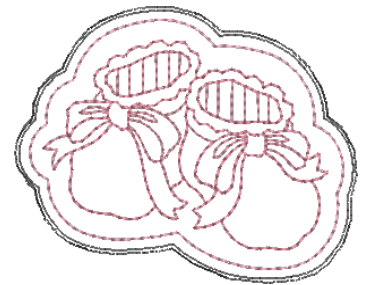
HG829_48_CWC For Use With the
Bernina CutWork Accessory

1.22 X 4.07 in.
30.99 X 103.38 mm
1,896 St. **S**



HG831_48_CWC For Use With the
Bernina CutWork Accessory

2.17 X 2.87 in.
55.12 X 72.90 mm
2,186 St.



HG833_48_CWC For Use With the
Bernina CutWork Accessory

3.39 X 2.71 in.
86.11 X 68.83 mm
2,380 St.



HG834_48_CWC For Use With the
Bernina CutWork Accessory

2.98 X 1.40 in.
75.69 X 35.56 mm
2,179 St. **S**

NOTE: Placement Stitch and Basting Stitch should match your background fabric.

HG809_48_CWC For Use With the Bernina CutWork Accessory

- 1. Placement Stitch & Cut Line 0020
- 2. Design..... 2600
- 3. Bernina CutWork Accessory Cut 1.....Cut 1
- 4. Bernina CutWork Accessory Cut 2.....Cut 2
- 5. Bernina CutWork Accessory Cut 3.....Cut 3
- 6. Bernina CutWork Accessory Cut 4.....Cut 4

HG810_48_CWC For Use With the Bernina CutWork Accessory

- 1. Placement Stitch & Cut Line 0020
- 2. Design..... 0454
- 3. Bernina CutWork Accessory Cut 1.....Cut 1
- 4. Bernina CutWork Accessory Cut 2.....Cut 2
- 5. Bernina CutWork Accessory Cut 3.....Cut 3
- 6. Bernina CutWork Accessory Cut 4.....Cut 4

HG812_48_CWC For Use With the Bernina CutWork Accessory

- 1. Placement Stitch & Cut Line 0020
- 2. Center..... 0015
- 3. Blue Linework 4220
- 4. Green Linework 5440
- 5. Bernina CutWork Accessory Cut 1.....Cut 1
- 6. Bernina CutWork Accessory Cut 2.....Cut 2
- 7. Bernina CutWork Accessory Cut 3.....Cut 3
- 8. Bernina CutWork Accessory Cut 4.....Cut 4

HG813_48_CWC For Use With the Bernina CutWork Accessory

- 1. Placement Stitch & Cut Line 0020
- 2. White Linework 0015
- 3. Letters..... 4421
- 4. Bernina CutWork Accessory Cut 1.....Cut 1
- 5. Bernina CutWork Accessory Cut 2.....Cut 2
- 6. Bernina CutWork Accessory Cut 3.....Cut 3
- 7. Bernina CutWork Accessory Cut 4.....Cut 4

HG815_48_CWC For Use With the Bernina CutWork Accessory

- 1. Placement Stitch & Cut Line 0020
- 2. Blue Linework 4610
- 3. Ribbon 0132
- 4. Bernina CutWork Accessory Cut 1.....Cut 1
- 5. Bernina CutWork Accessory Cut 2.....Cut 2
- 6. Bernina CutWork Accessory Cut 3.....Cut 3
- 7. Bernina CutWork Accessory Cut 4.....Cut 4

HG816_48_CWC For Use With the Bernina CutWork Accessory

- 1. Placement Stitch & Cut Line 0020
- 2. Design..... 4610
- 3. Letters..... 0015
- 4. Bernina CutWork Accessory Cut 1.....Cut 1
- 5. Bernina CutWork Accessory Cut 2.....Cut 2
- 6. Bernina CutWork Accessory Cut 3.....Cut 3
- 7. Bernina CutWork Accessory Cut 4.....Cut 4

HG818_48_CWC For Use With the Bernina CutWork Accessory

- 1. Placement Stitch & Cut Line 0020
- 2. Rose & Linework..... 2153
- 3. Lettering..... 1755
- 4. Bernina CutWork Accessory Cut 1.....Cut 1
- 5. Bernina CutWork Accessory Cut 2.....Cut 2
- 6. Bernina CutWork Accessory Cut 3.....Cut 3
- 7. Bernina CutWork Accessory Cut 4.....Cut 4

HG820_48_CWC For Use With the Bernina CutWork Accessory

- 1. Placement Stitch & Cut Line 0020
- 2. Linework 0131
- 3. Lettering..... 0015
- 4. Bernina CutWork Accessory Cut 1.....Cut 1
- 5. Bernina CutWork Accessory Cut 2.....Cut 2
- 6. Bernina CutWork Accessory Cut 3.....Cut 3
- 7. Bernina CutWork Accessory Cut 4.....Cut 4

HG821_48_CWC For Use With the Bernina CutWork Accessory

- 1. Placement Stitch & Cut Line 0020
- 2. Design..... 0015
- 3. Bernina CutWork Accessory Cut 1.....Cut 1
- 4. Bernina CutWork Accessory Cut 2.....Cut 2
- 5. Bernina CutWork Accessory Cut 3.....Cut 3
- 6. Bernina CutWork Accessory Cut 4.....Cut 4

HG823_48_CWC For Use With the Bernina CutWork Accessory

- 1. Placement Stitch & Cut Line 0020
- 2. Inner Linework 2764
- 3. Outer Linework 2600
- 4. Lettering..... 2764
- 5. Bernina CutWork Accessory Cut 1.....Cut 1
- 6. Bernina CutWork Accessory Cut 2.....Cut 2
- 7. Bernina CutWork Accessory Cut 3.....Cut 3
- 8. Bernina CutWork Accessory Cut 4.....Cut 4

HG825_48_CWC For Use With the Bernina CutWork Accessory

- 1. Placement Stitch & Cut Line 0020
- 2. Design..... 2171
- 3. Bernina CutWork Accessory Cut 1.....Cut 1
- 4. Bernina CutWork Accessory Cut 2.....Cut 2
- 5. Bernina CutWork Accessory Cut 3.....Cut 3
- 6. Bernina CutWork Accessory Cut 4.....Cut 4

HG826_48_CWC For Use With the Bernina CutWork Accessory

- 1. Placement Stitch & Cut Line 0020
- 2. Design..... 1921
- 3. Bernina CutWork Accessory Cut 1.....Cut 1
- 4. Bernina CutWork Accessory Cut 2.....Cut 2
- 5. Bernina CutWork Accessory Cut 3.....Cut 3
- 6. Bernina CutWork Accessory Cut 4.....Cut 4

HG828_48_CWC For Use With the Bernina CutWork Accessory

- 1. Placement Stitch & Cut Line 0020
- 2. Orange Linework 0904
- 3. Design..... 0015
- 4. Bernina CutWork Accessory Cut 1.....Cut 1
- 5. Bernina CutWork Accessory Cut 2.....Cut 2
- 6. Bernina CutWork Accessory Cut 3.....Cut 3
- 7. Bernina CutWork Accessory Cut 4.....Cut 4

HG829_48_CWC For Use With the Bernina CutWork Accessory

- 1. Placement Stitch & Cut Line 0020
- 2. Linework 0015
- 3. Lettering..... 2508
- 4. Bernina CutWork Accessory Cut 1.....Cut 1
- 5. Bernina CutWork Accessory Cut 2.....Cut 2
- 6. Bernina CutWork Accessory Cut 3.....Cut 3
- 7. Bernina CutWork Accessory Cut 4.....Cut 4

HG831_48_CWC For Use With the Bernina CutWork Accessory

- 1. Placement Stitch & Cut Line 0020
- 2. Design..... 2532
- 3. Bernina CutWork Accessory Cut 1.....Cut 1
- 4. Bernina CutWork Accessory Cut 2.....Cut 2
- 5. Bernina CutWork Accessory Cut 3.....Cut 3
- 6. Bernina CutWork Accessory Cut 4.....Cut 4

HG833_48_CWC For Use With the Bernina CutWork Accessory

- 1. Placement Stitch & Cut Line 0020
- 2. Light Pink Linework..... 2530
- 3. Dark Pink Linework..... 2520
- 4. Bernina CutWork Accessory Cut 1.....Cut 1
- 5. Bernina CutWork Accessory Cut 2.....Cut 2
- 6. Bernina CutWork Accessory Cut 3.....Cut 3
- 7. Bernina CutWork Accessory Cut 4.....Cut 4

HG834_48_CWC For Use With the Bernina CutWork Accessory

- 1. Placement Stitch & Cut Line 0020
- 2. Linework 5730
- 3. Lettering..... 5531
- 4. Bernina CutWork Accessory Cut 1.....Cut 1
- 5. Bernina CutWork Accessory Cut 2.....Cut 2
- 6. Bernina CutWork Accessory Cut 3.....Cut 3
- 7. Bernina CutWork Accessory Cut 4.....Cut 4

SUPPLIES

- Cut-Away Stabilizer
- Temporary Spray Adhesive
- Appliqué Fuse & Fix Stabilizer
- Embroidery Thread
- Stabilizer that is appropriate for your project
- BERNINA® CutWork Accessory

PREPARE APPLIQUE FABRIC

1. Starch appliqué fabric 2-3 times following manufacturer's instructions.
2. Appliqué fabric should be crisp.
3. Iron Appliqué Fuse & Fix to the wrong side of the starched appliqué fabric following instructions on product packaging.

CUT APPLIQUE PIECES

1. Hoop one layer of Cut-Away Stabilizer.
2. Send first CWA file to the embroidery machine. (CWA files are the pre-cut appliqué files to use with the CutWork Accessory; these files will end in CWA01, CWA02, and CWA03 etc. The number of CWA files available for each design will depend upon how many separate appliqués each design contains.)
3. Stitch the first color, this will be the placement stitch.
4. Remove the hoop from the machine but do not remove the stabilizer from the hoop. Spray the hooped stabilizer with temporary spray adhesive. Lay prepared appliqué fabric over the placement stitch, being sure to completely cover the stitching. Apply pressure to appliqué fabric to ensure it is adhered.
5. Stitch the second color, this will be the basting stitch. It is meant to baste the appliqué fabric to your hooped stabilizer.
6. Replace normal stitch plate with the CutWork stitch plate.
7. Unthread the machine.
8. If necessary, turn off the upper thread control on your machine. Refer to your machine's user manual. Note that the most recent version of the 830 will perform this task automatically.
9. Replace embroidery needle with the CutWork Accessory.
10. Replace embroidery foot with foot #44 (If you do not have foot #44 you can leave foot #15 on the machine; foot #44 will simply keep the cut fabric from flagging as much).
11. Attach the hoop to the machine.
12. To cut the first appliqué piece follow the "thread changes" on your machine screen and turn the dial on the CutWork tool as required.
13. Remove the hoop from the machine.
14. Gently remove cut appliqué piece, trimming any thread that may have not been cut completely.

PHOTO 1

15. Repeat as needed for designs with multiple appliqué pieces.



TACKDOWN APPLIQUE AND COMPLETE EMBROIDERY DESIGN

1. Replace the embroidery needle and rethread the machine.
2. Replace the embroidery foot #15.
3. Spray hoop sized piece of stabilizer that is appropriate for your project and adhere to wrong side of background fabric or project that is to be hooped.
4. Hoop fabric/project and stabilizer.
5. Attach hoop to machine.
6. Send the embroidery file to the machine (this is not a CWA file).
7. Stitch design as normal following the thread changes on the provided thread chart stopping after each Appliqué Placement Stitch.

1. After stitching an Appliqué Placement Stitch, take the precut appliqué pieces required and peel off the cutaway backing and the release paper revealing a sticky backing. **PHOTO 2**
2. Remove hoop from machine, but do not remove the fabric from the hoop.
3. Adhere precut appliqué piece evenly over the Appliqué Placement Stitch; use pressure to make sure pieces stick well. **PHOTO 3**
4. Reattach hoop to machine.
5. Continue stitching design until all appliqué pieces are placed and all stitching is complete. **PHOTO 4**

NOTE: Design pictured is for instructional purposes and may not be included in this collection.

